



TAD – 12AX7WA-R High-Mu Twin Triode

The TAD™ 12AX7WA-R is a miniature, high-mu twin triode with very low noise but less gain also. Recommended to solve severe microphonic problems of High Gain amplifiers especially combo amplifiers.

Deep bass, reduced mid band and aggressive top end with good overall definition Best for high gain distortion sounds as well as for those deep-bass required for modern preamps.

Recommended for V1 positions. For a more balanced tone we recommend our new **RT080 7025WA Highgrade**. The TAD 12AX7WA-R can replace any 7025, 12AX7WA, 12AX7WB, 12AX7LPS, 12AX7EH, ECC83 or E83CC.

Characteristics of a bogey tube:

Electrical		
Heater:	Series	Parallel
Voltage (AC or DC)	12.6V +/-1.0	6.3+/-0.5
Current	0.18	0.36
Heating		
		Indirect
Cathode-to-heater potential, max.		
		100 V
Direct interelectrode capacitances, max.***		
Grid to plate		2.2 pF
Grid to cathode		2.1 pF
Grid to heater		1.4 pF
Plate to cathode		0.5 pF
Mechanical		
Operating Position		
		Any
Base		
		E9-1, Small Button 9 Pin
Dimensions:		
Height		56.5 mm
Seated height		49.3 mm
Diameter		22.6 mm
Cooling		
		conventional
Approximate net weight		
		14 g

***Without external shielding, nominal values

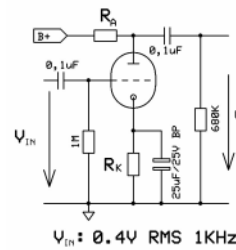
AF Power Amplifier

Maximum ratings	
DC plate voltage	300 V
Positive DC Grid Voltage	0 V
Negative DC Grid Voltage	-55 V
Plate dissipation	1.0 W
Bulb temperature (surface hottest point)	95°C
Cathode Current	10 mA

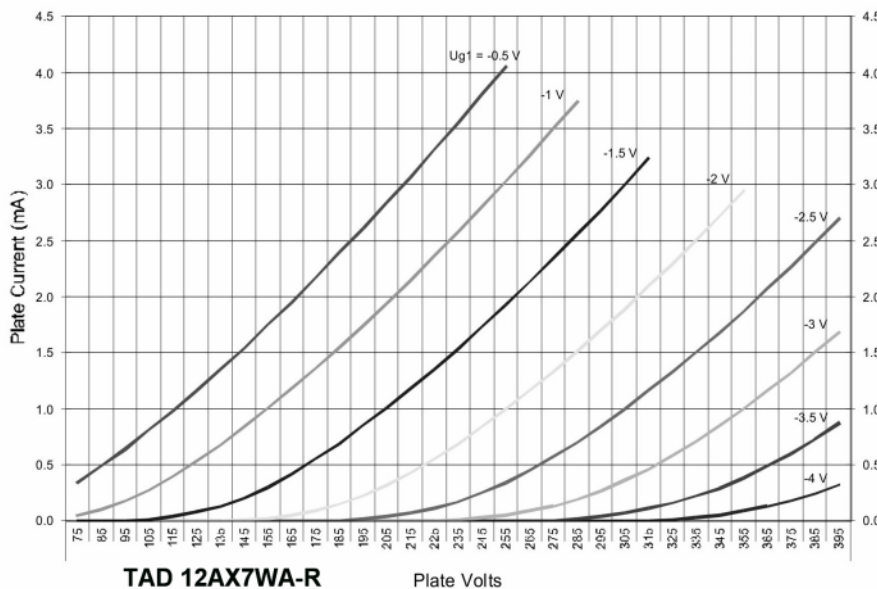
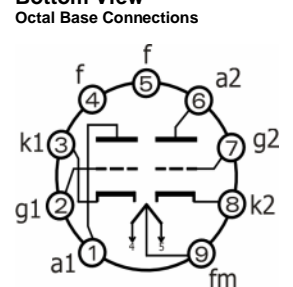
RT006, 12AX7WA-R

B+ / V	R _A / kΩ	R _K / kΩ	V _{Out} / V _{RMS}	V _{Out} / V _{IN}	THD / %	I _A / mA
200	47	1.50	13.6	34.0	5.6	0.8
250	47	1.20	15.2	38.0	4.0	1.1
300	47	1.00	16.4	41.0	3.1	1.5
350	47	0.82	16.9	42.3	2.6	1.8
400	47	0.68	17.3	43.3	2.3	2.0
200	100	1.80	18.1	45.3	4.8	0.6
250	100	1.50	19.3	48.3	3.5	0.8
300	100	1.20	20.7	51.8	2.8	1.1
350	100	1.00	21.7	54.3	2.2	1.4
400	100	0.82	22.7	56.8	1.8	1.7
200	220	2.70	19.7	49.3	5.0	0.4
250	220	2.20	21.5	53.8	3.7	0.5
300	220	1.50	23.4	58.5	2.9	0.7
350	220	1.20	24.6	61.5	2.4	0.9
400	220	1.00	25.5	63.8	2.0	1.1

Test arrangement:



Bottom View



Outline View

